

**ITEM NO. : 16**

**ITEM : TOP MOUNTED MAGNETIC LEVEL INDICATOR DRAG OR ROLLER TYPE  
LEVEL INDICATION AND WITH OR WITHOUT SWITCHES.  
REFER OUR G. A. DRG.NO.RTMLIDA-1022-A/O (0R) RTMLIRA-1023-A/O**

**PRINCIPLE OF OPERATION :**

Here in this case this Indicator is used as a direct local level indicator mounted on top of the vessel or RCC tank. The float is made out of SS304/SS316/PP/PVC/PTFE/PVDF. As the level inside the tank rises the float, which buoys up, moves the connecting pipe to the region of visibility on top.

Moreover there will be clamp on type Magnetic Switches are provided as per your request having repulsion type magnetic arrangement to have the actuation at desired levels. These switches are housed in a Cast Aluminium enclosure and they are adjustable over the entire range of the Level Indicator.

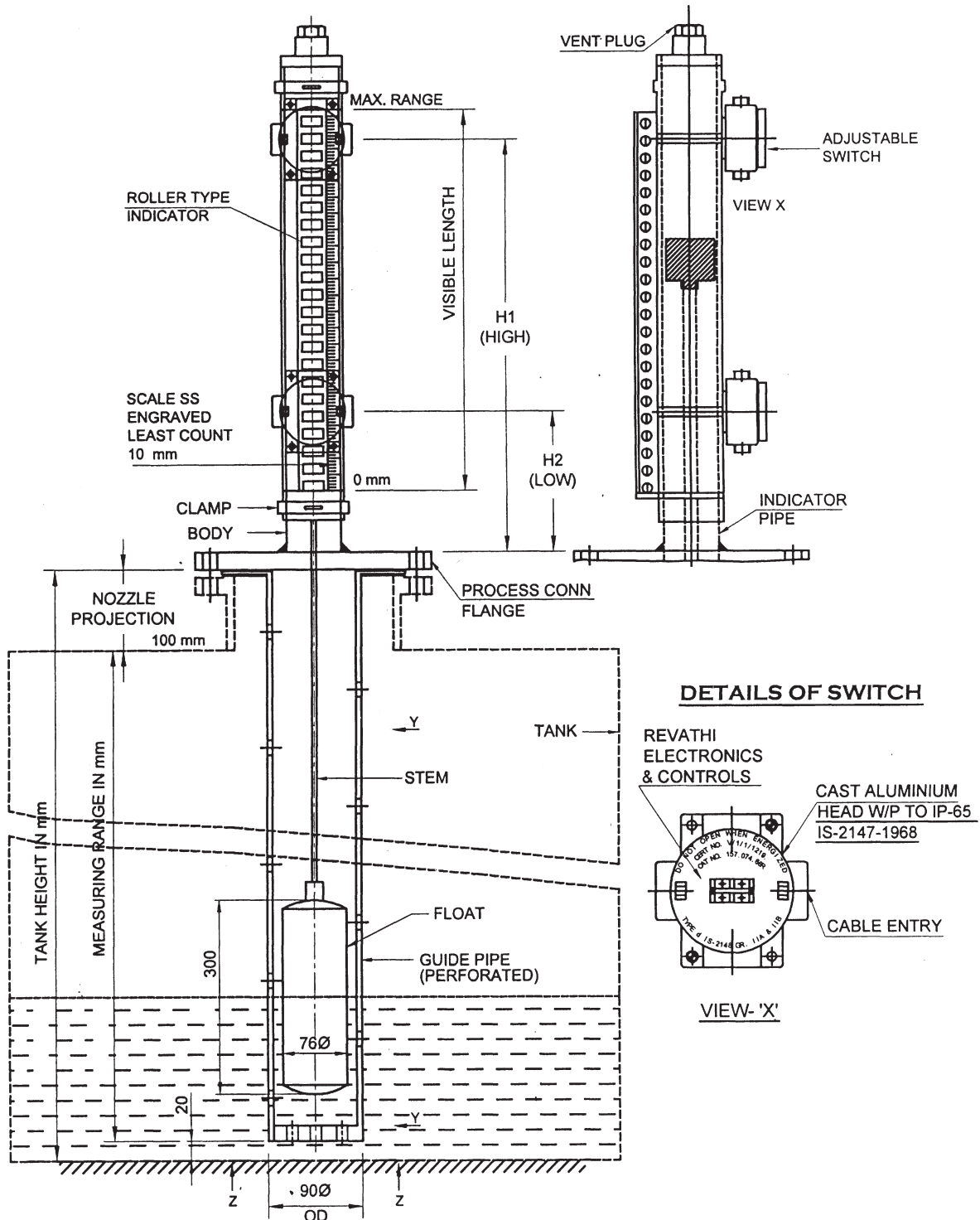
**DETAILS OF MAGNETIC SWITCH :**

The basic switch used in all case will be of imported origin and sealed type. The switch used is hermetically sealed, inert gas filled magnetic switch with gold plated contacts of the following specifications.

**MATERIAL SPECIFICATIONS :**

1.	Type	:	Top mounted level indicator with Drag / Roller type with / without switches
2.	Process conn. Flange size & rating	:	4" BS 10 table 'E' or 4" ANSI 150 RF B 16.5
3.	Service	:	To mention
4.	Op.pressureKg/Cm2g/temp.° C /Sp.Gr.	:	To mention
5.	Hydro test pressure Kg/Cm2g	:	1.5 times of max. Op. Pressure
6.	All wetted parts material	:	SS 304 / SS 316 / PP/ PVC/ HDPE/PVDF
7.	Material of Flange	:	CS with SS lipping to have wetted parts as SS.
8.	Float Material	:	SS 304 / SS 316 / PP/ PVC/ HDPE /PVDF
9.	Guide Pipe Material	:	SS 304 / SS 316 / PP/ PVC/ PVDF
10.	Mounting	:	Tank top
11.	Scale	:	Acrylic / SS white background with black markings in cms. Lines are engraved @ each 10 mm. i.e. ± 10 mm could be adjusted
12.	Indicator accuracy	:	± 10 mm
13.	Measuring range	:	To mention
14.	Glass tube Material	:	Transparent Borosilicate
15.	Contact Rating	:	230 VAC 5 Amps (Surge) 60 VA/W in the case of SPDT switch can directly operate 110/230 VAC Siemens or L&T size 1 contactor.
16.	Max..Initial contact resistance	:	150 milli ohms
17.	Max. Operate time	:	0.5 milli second
18.	Max. Release time	:	0.1 milli second
19.	Life expectancy	:	100-million operations
20.	Basic Switch	:	Will have SPDT
21.	Alarms / Qty	:	If required will be provided as per our general arrangement DRG NO. RTMLIDA-1022-A/O (0R) RTMLIRA-1023-A/O
22.	Enclosure	:	Weatherproof or flameproof
23.	Cable entry	:	¾" ET (F)
24.	Quantity	:	To Mention

**TOP MOUNTED ROLLER TYPE MAGNETIC LEVEL INDICATOR  
WITH SWITCHES**



1. TOP MOUNTED LEVEL INDICATOR WITH ROLLER TYPE INDICATOR W/P & FLP SWITCHES  
DRG NO. RTMLIRA-1023-A/O

2. TOP MOUNTED LEVEL INDICATOR WITH DRAG TYPE INDICATION W/P & FLP SWITCHES  
DRG NO. RTMLIDA-1022-A/O